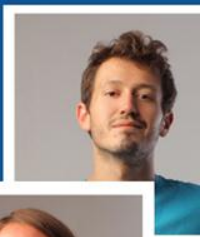
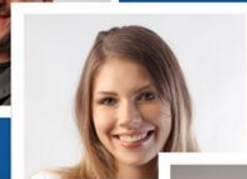
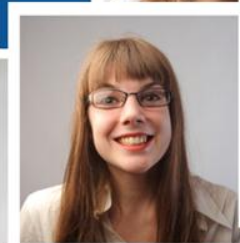
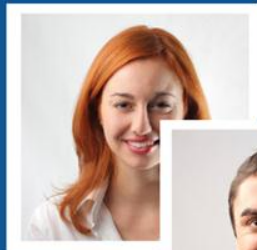
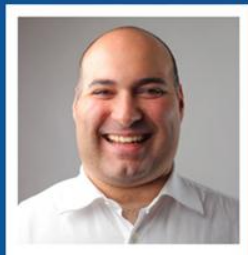


The European Social Fund

State of play

Anette Björnsson, DG EMPL





Content of the presentation

Short general introduction to the ESF

State of play of the procedures

The focus on the Roma



ESF regulation takes it outset in the Europe 2020 and the European Semester

- Guideline 10: social inclusion and combat poverty
- Country Specific Recommendations



ESF minimum share for the first time in the history of cohesion policy

- **23.1% ESF minimum share**
- Rationale: ensure MS have sufficient resources to achieve the employment, social and education targets and objectives of Europe 2020
- **Earmarking for social inclusion: 20% at national level**



The social inclusion strand of ESF

- The general approach in the new ESF regulation is to have a horizontal focus.
 - mainstreaming
 - not explicit focus on any groups
- Only exception is marginalised groups where there is an explicit targeting though not exclusive.



Shared management - partnership

- Design and implementation of programmes are done in a partnership between the European Commission and national and regional authorities, including NGOs and workers' organisations.
- Shared management which means that the responsibility is taken at the appropriate level:
 - The regulatory framework is designed at European level through consultation with a wide variety of stakeholders,
 - Operational Programmes are negotiated between national authorities and the Commission. Implementation on the ground, through Operational Programmes, is managed by the relevant authorities in each country.



Current state of play - general

**After the entering into force of the ESF regulation
Member States are preparing their**

1. Partnership Agreements
2. Operational programmes

For the new programming period

- **Deadline was end of April for submitting the Partnership Agreements**
- **Right now negotiation between the Commission and the Member States/managing authorities is ongoing.**
- **4 countries' Partnership Agreement were adopted in May**



Current state of play – the focus on Roma

The main picture for the countries focusing on Roma:

- **Many countries that are having Roma in the PA are having mainstreamed measures**
 - Included under the marginalised groups' access to the labour market
 - Included in the measures under education
- **Few are having measures targeted directly at Roma**
 - Mainly in countries with large Roma communities which are facing particular challenges



Current state of play – the focus on Roma (2)

The adopted Partnership Agreements:

- **2 direct reference to Roma but mainstreamed**
- **2 no reference to Roma**

The European Social Fund



More info: ec.europa.eu/esf

